

Patents Pending

Premium line of super rough surface, heavy duty LED work lights  
Lightweight, compact design ideal for use on mobile equipment

Customized optics designed to minimize glare, provide precise optical control and increase equipment efficiency

Numerous options allow for optimal lighting in each unique and harsh application



### Key Applications

#### Surface mining equipment

- haul trucks • front loaders • blasthole drills • dozers • hydraulic excavator shovels

#### Underground mining equipment

- jumbos • scoopers • dumpers

#### Construction equipment

- mobile cranes • excavators • rollers

#### Port equipment

- material handling • reach stackers

#### Marine vessels

- patrol boats • fishing boats

#### Agricultural equipment

- combine harvester • tractors • ATVs

#### Forestry equipment

- harvesters • forwarders • loaders

#### Other applications

- utility vehicles • pick-up trucks • off-road equipment • forklift trucks • maintenance of Way (MOW) railroad maintenance equipment • solar and generator powered lighting

### Compliances

CE

IP68

IP69K

IK06 (glass)

IK10 (polycarbonate)

### Wattage

	12V	24V	48V
MED	58W	48W	48W

### Specifications

Construction	Die cast aluminum housing
Finish	Gray powder coat
Hardware	304 stainless steel external hardware
Lens	High temperature, impact-resistant polycarbonate (PC) or tempered glass (GL) Non-stick coating
Light source	Conformal coated LED circuit board 48W Cool white (5000K) LEDs - up to 5000 lumens Amber LEDs - up to 3650 lumens Spot (SP), Flood (FL), Elliptical (EP), and No-Glare (NG) optical patterns
Power source	12-48V DC; 24-48V DC Over-voltage, over-temperature and reverse polarity protection
Wiring	Stranded wires 10.00 inch cord with molded Deutsch connector
Ambient operating temperature	-40°C to +65°C Light output regulation in high ambient temperature environments protects the life of the LEDs
Shock	65G along 3 axes
Vibration	5 Grms, 100-2200Hz along 3 axes
Salt spray	Tested to ASTM B117 for 1000 hours
Aiming	120° aiming capability, 5° markings on mounting harp Colored aiming indicator designates fixture beam pattern (SP: red, FL: blue, NG: silver) 304 stainless steel harp - standard
Mounting	Round mounting bracket option (RND)
Estimated Weight	4.5 lb (2.0 kg)
Warranty	3 years

For IES files, see website or contact factory

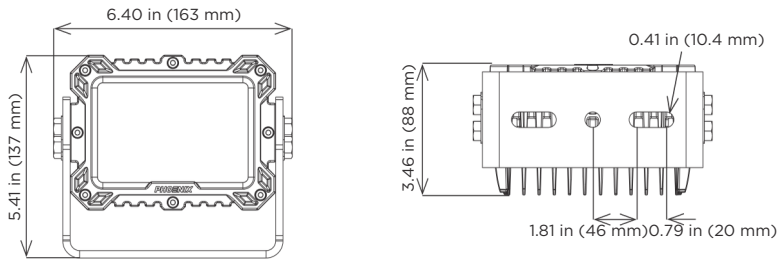


# Sturdilite® Master Series MED

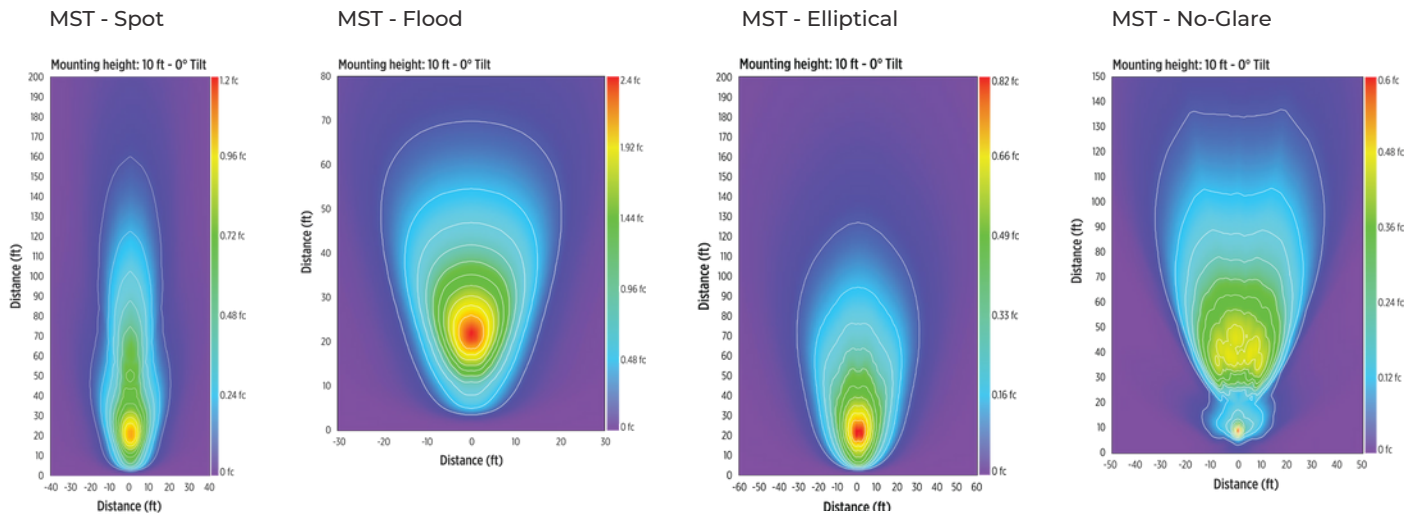
Low-voltage LED Floodlight



## Dimensions



## Isolux Charts



## Ordering Information

Example: MST-MED-PC-SP-12-48

Fixture	Model	Lens	Optic	Voltage	Color Temperature 4	Mounting 5
MST	MED	PC	SP	12-48	AM <sup>2,3</sup>	RND
		GL 1	FL	24-48 2		LPH 2
			EP			
			NG 3			

<b>Model</b>	<b>Lens</b>	<b>Optic</b>
MED 48W	PC High temperature, impact-resistant polycarbonate	SP Spot Optic
	GL 1 High temperature, tempered glass	FL Flood Optic
		EP Elliptical Optic
		NG 3 No-Glare Driving & Perimeter Optic

<b>Voltage</b>	<b>Color Temperature 4</b>	<b>Mounting 5</b>
12-48 12-48V DC	AM <sup>2,3</sup> Amber LEDs, ideal for high fog/dust/snow/debris	RND Round mounting bracket for easy retrofit of Kotmatsu haul trucks (shown below)
24-48 2 24-48V DC		LPH 2 Low profile harp for extremely compact mounting locations

### Notes

- 1 GL option recommended for applications where excessive dirt/debris, humidity and heat are present
- 2 Contact factory for availability
- 3 Only available with GL option
- 4 Cool white (5000K) LEDs standard (leave blank)
- 5 Harp mount standard (leave blank)

Special Projects: We may be able to accommodate your special projects, so please don't hesitate to ask about additional options. Minimum order quantities and/or extended lead times will apply. Contact your Phoenix representative with specific inquiries.

## Option(order separately)

Round Mounting Bracket  
MST-MED-RND

