



Premium fixture enhances productivity, safety and security

Designed to withstand the world's harshest environments

500 model delivers up to 80,000 lumens and replaces 1000W HID fixtures

250 model delivers up to 40,000 lumens and replaces 400W HID fixtures

High efficacy lighting with greater than 140 lumens per watt

Key Applications

Large area high mast
Roadway high mast
Shipyards high mast
Container yard high mast
Hangar lighting
Aviation ramps and aprons
Prison large areas
Military bases
Industrial facilities

Compliances

UL/cUL Listed to:

- UL 1598 Suitable for Wet Locations
- UL 8750 for LED Equipment
- CSA C22.2 No. 250.0

DLC

International Dark Sky Association approved (WW options)

IP66 (without twist-lock receptacle)

Specifications

Construction	High strength, AL5052 aluminum Built-in, adjustable visor (optional - GG)
Finish	Weather-resistant powder coat
Hardware	Marine grade stainless steel
Light source	Premium LED modules 250 model, up to 265W and 40,000 lumens 500 model, up to 530W and 80,000 lumens CCT: Cool white (5000K), neutral white (4000K), warm white (3000K) UV-resistant, polycarbonate lens 50,000 hours at up to 45°C
Lifetime	100,000 hours at up to 35°C 90 - 305 VAC, 50/60 Hz (120-277V) 249 - 528 VAC, 50/60 Hz (277-480V)
Power source	Waterproof to IP67 20kV/10kA surge protection > 0.9 at 277V
Power factor	
Ambient operating temperature	-40°C to +45°C
Mounting	Trunnion mount (standard); 5° indexed aiming Pipe mount (optional) accommodates NPS 2.00 inch (2.38 inch OD)
Fixture weight	250 model - 31 lb (14.1 kg) 500 model - 39.5 lb (17.9 kg) 250 model - 0.96 sq. ft. (0.09 m2)
EPA (wind load)	500 model - 1.21 sq. ft. (0.11 m2) 5 years
Warranty	

For IES files, see website or contact factory



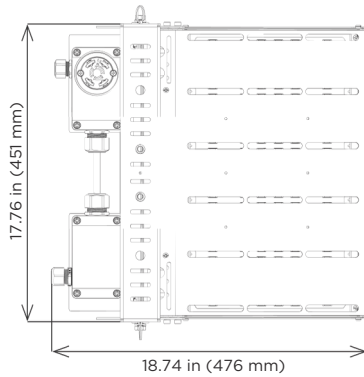
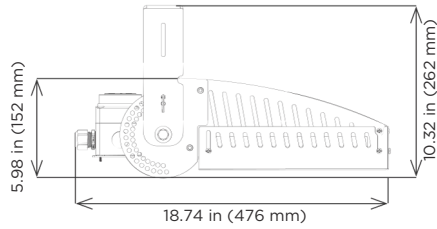
Highland® Series

High Mast & Area LED Floodlight

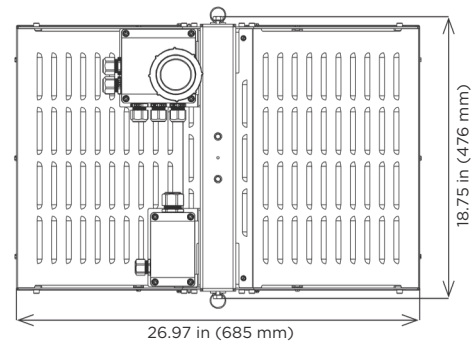
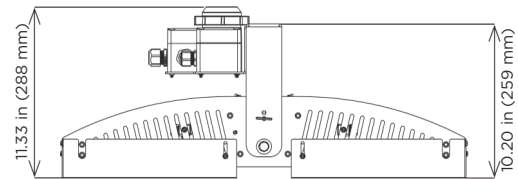
PHOENIX
DURABILITY X DESIGN™

Dimensions

Note: Models shown with twist-lock receptacle option.
250 Model



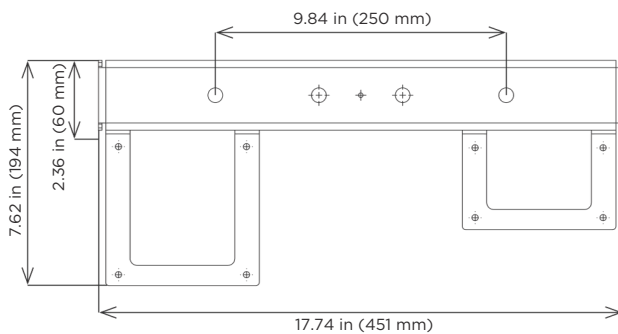
500 Model



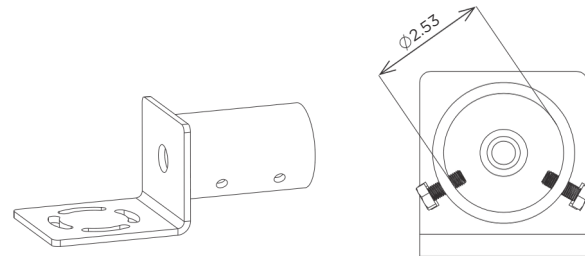
Mounting

Trunnion Mount

(standard)



Pipe Mount Kit
PM



Ordering Information

Example: HL-500-LX-277-480-NW-TR-PM-GG 1

Fixture	Model	Optic	Voltage	CCT2	Options
HL	250	LT	120-277	CW	PM
	500	LQ	277-480	NW	GG 4
		LR		WW 4	TR 1, 3, 5
		LZ			
		LV			
		LX			

Model	Optic	Voltage	CCT 2
250 Up to 265W and 40,000 lumens	LT Narrow spot	120-277 120-277V, 50-60Hz	CW Cool white LEDs (5000K)
500 Up to 530W and 80,000 lumens	LQ Medium spot	277-480 277-480V, 50-60Hz	NW Neutral white LEDs (4000K)
	LR Wide spot		WW 4 Warm white LEDs (3000K)
	LZ Type II		
	LV Type IV		
	LX Type V		

Options

PM	Pipe mount, accommodates NPS 2.00 inch (2.38 inch OD)
GG 4	Glare guard
TR ^{1, 3, 5}	Twist-lock receptacle (required for Synapse® Lighting Controller)

Notes

- 1 TR comes standard with shorting cap
- 2 Additional color temperatures available upon request
- 3 IP63 with twist-lock receptacle
- 4 International Dark Sky Association approved
- 5 Dimming when using Synapse® TL7 Controller

Special Projects: We may be able to accommodate your special projects, so please don't hesitate to ask about additional options. Minimum order quantities and/or extended lead times will apply. Contact your Phoenix representative with specific inquiries.

Accessories (order separately)

Twist-lock Photocontrol
KIT, HM-PC-120 (120-277V)
KIT, HM-PC-480 (480V only)

Synapse® Twist-lock Lighting Controller
SYN-TL7-HVG (120-480V)

Highland® Series

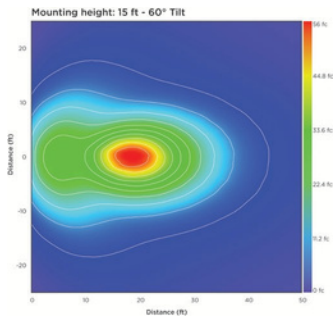
High Mast & Area LED Floodlight

PHOENIX
DURABILITY X DESIGN™

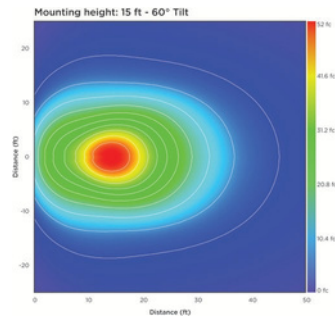
Isolux Charts

Charts shown reflect cool white LEDs.

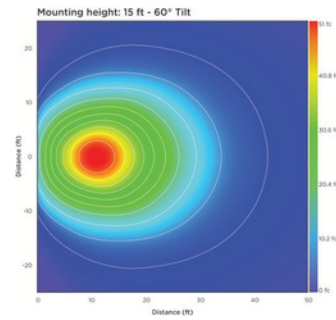
Highland 250 - LT



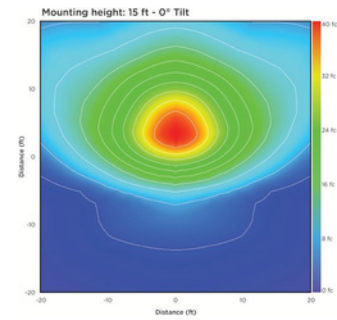
Highland 250 - LQ



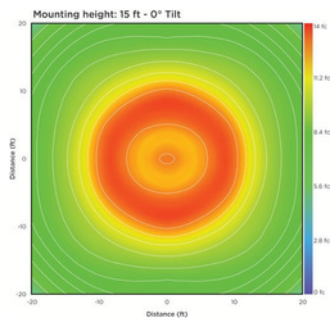
Highland 250 - LR



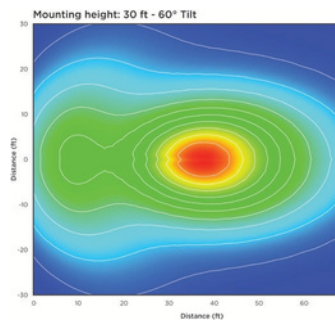
Highland 250 - LV



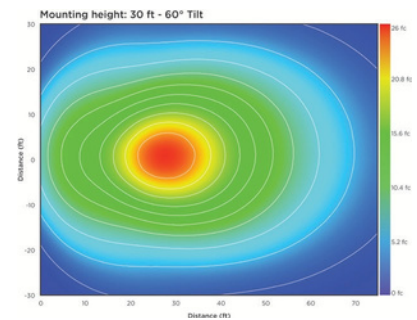
Highland 250 - LX



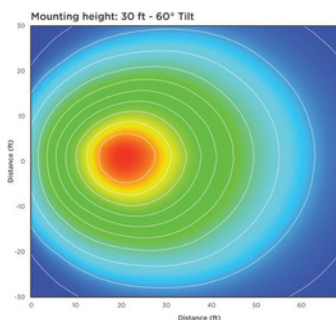
Highland 500 - LT



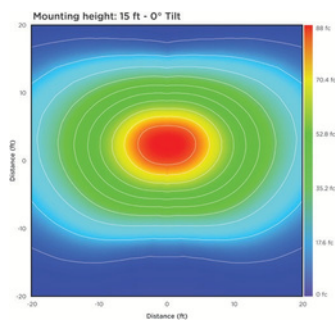
Highland 500 - LQ



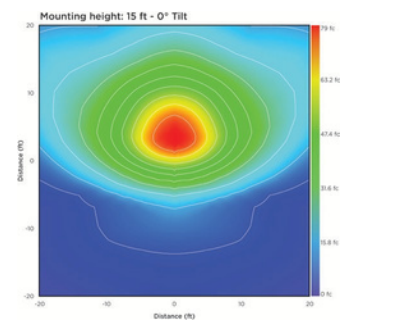
Highland 500 - LR



Highland 500 - LZ



Highland 500 - LV



Highland 500 - LX

