



Electrical Group

Distribution of Electrical
Equipment and Material

PRODUCT CATALOGUE :

KILLARK

SOLDEXEL



HOLOPHANE[®]

EAT•N

CROUSE-HINDS

SCI

STEEL COMPONENTS INC.



HAZARDOUS AREAS

S&M CLASSIFIED AREAS

Discover excellence in electrical solutions for classified areas with S&M Electrical Group!

Our company takes pride in offering a wide range of products specifically designed to meet the highest standards of quality and safety in classified environments. From luminaires to control equipment, each of our products has been meticulously manufactured to ensure reliable and long-lasting performance in demanding settings.

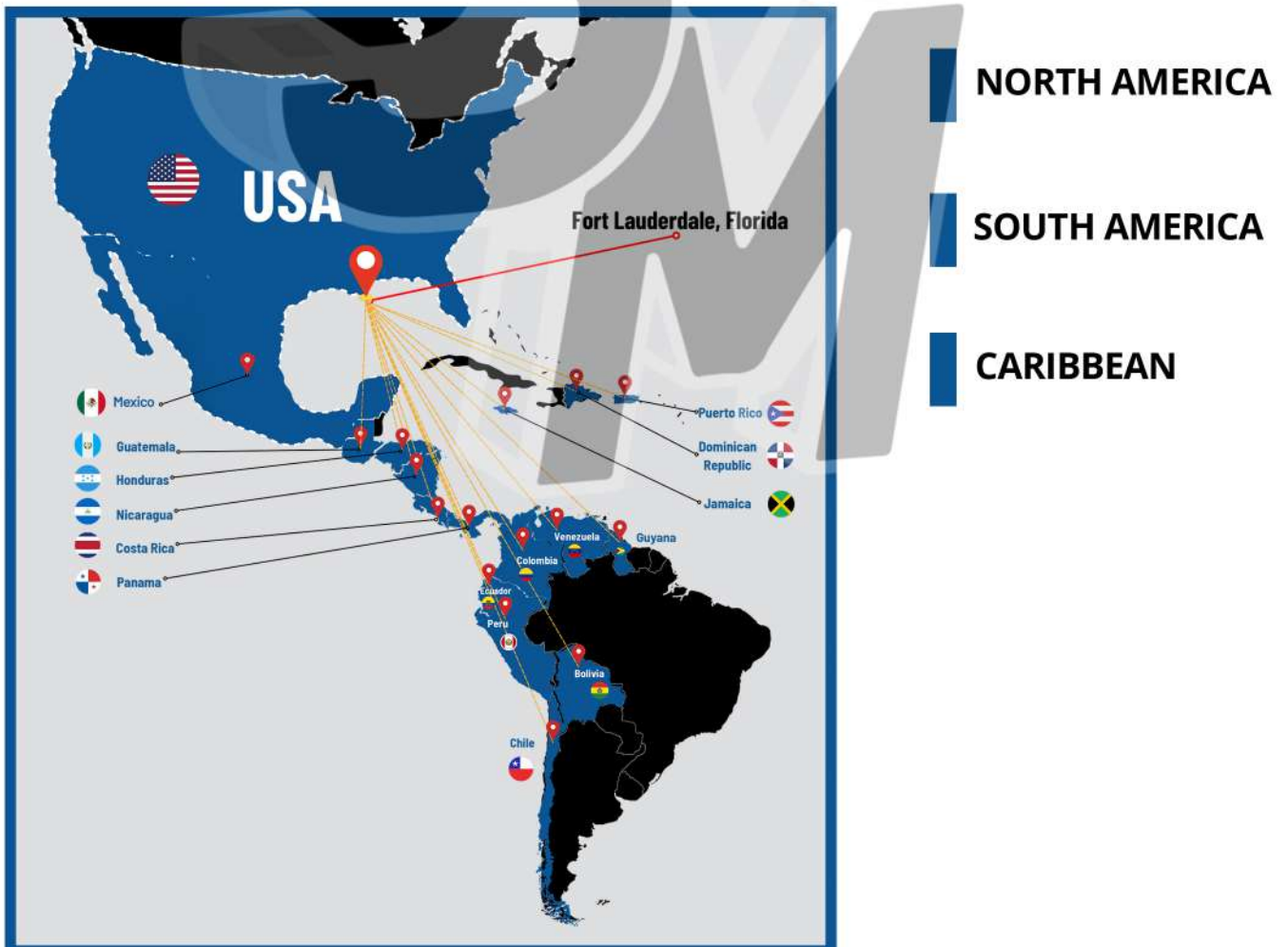
At S&M Electrical Group, we understand the importance of safety and reliability in classified environments.

That's why we are committed to providing products that comply with all relevant regulations and standards, ensuring the peace of mind and protection of our customers.

Explore our diverse range of products for classified areas and discover how S&M Electrical Group can meet all your electrical needs with unmatched quality, reliability, and excellence.

EXPORT LEADERS

We export to all of America and the Caribbean



SOCKETS

**KILLARK KP TAKES FOR CLASSIFIED
AREAS CLA 1 DIV 2**



**TAKE VERSAMATE FOR CLASSIFIED
AREAS CLA 1 DIV 2**



MOUNTED POWER OUTLET 3 X 60A



**60A RECEPTACLE, 2W-3P CLASS 1, DIV
1 & 2, NEMA7**



**30A RECEPTACLE, 3W-4P CLASS 1, DIV
1 & 2, NEMA 7**



**OUTLET COVER 20A, 2P-3W, 250VAC,
CLA 1, DIV 1&2**



**UGP EXPLOSION PROOF 2X20A+T
250V NEMA 6-20P, CLA 1, DIV 1&2**



**EXPLOSION PROOF PLUG FOR
CLASSIFIED AREAS CLASS 1 DIVISION**



**FSQC MOUNTING POWER OUTLET 3 X
60A+T 600V,CL1- DIV 1**



CONTROL STATION

30A DISCONNECT SWITCH, FOR CLASSIFIED AREAS, CLASS 1 DIVISION 1 & 2



20A ON-OFF ROTARY SWITCH, FOR AREAS CLASSIFIED CLASS 1, DIVISION 1 & 2, NEMA 7



40A ON OFF SWITCH FOR CLASSIFIED AREAS CLASS 1, DIVISION 1 & 2 NEMA 4X



FXCS CONTROL STATIONS WITH MUSHROOM HEAD PUSHBUTTON CLASS 1, DIV 1 & 2, NEMA7



FXCS CONTROL STATION WITH START STOP PUSH BUTTON, CLASS 1, DIV 1 & 2,



DSD922 START-STOP CONTROL STATION, CLASS 1 DIVISION 1 & 2



DSD962 START-STOP CONTROL STATION, CLASS 1 DIVISION 1 & 2



DSD970 CONTROL STATION WITH PUSH BUTTON



N2S and N2SC CONTROL STATIONS



CONVEYOR CONTROL SWITCH: AFU AND AFUX SERIES



LUMINAIRES

STANDARD MOUNT LED REFLECTOR,
CLASS 1, DIV 1 & 2, IP66



KFL LED PROJECTOR FOR CLASSIFIED AREAS 1.
DIV2



CLASS 1 DIVISION METAL HALIDE
REFLECTOR. 1 & 2 NEMA4X, IP66



KWPL LED WALL MOUNT LUMINAIRE
120-277V CLA 1, DIV 1 & 2



KF1L LED REFLECTOR FOR CLASSIFIED
AREAS CLASS 1 DIVISION 1 & 2 IP66



KFLH LED REFLECTOR FOR CLASSIFIED
AREAS CLA 1 DIV 1 & 2, IP66



L1L LED LINEAR LUMINAIRE FOR
HAZARDOUS AREAS CLASS 1, DIV 1 & 2,
IP66



LZ2SL LED LINEAR LUMINAIRE FOR
CLASSIFIED AREAS CLA1 DIV 1 & 2, IP66



EML LED LUMINAIRE CLASSIFIED AREAS
CLASS 1 DIVISION 1



VSL LED UTILITY LUMINAIRE
VAPOR-TIGHT CLASS 1 DIVISION 1 & 2



LUMINAIRES

EEML LED LUMINAIRE FOR CLASSIFIED AREAS, CLASS 1, DIVISION 2, IP66,



VM4L LED LUMINAIRE FOR CLASSIFIED HAZARDOUS AREAS CLASS 1 DIVISION 1 & 2, IP66



HIGH BAY INDUSTRIAL LED LUMINAIRE CLASS 1 DIVISION 1 & 2



EBS EMERGENCY LIGHT FOR CLASSIFIED AREAS CLASS 1, DIVISION 1 & 2



EXPLOSION-PROOF LED LUMINAIRE FOR CLASSIFIED AREAS CLA 1 DIV 1



DMVF CLASS 1 DIVISION 2 EXIT EMERGENCY LIGHT



N2LPS 2 X 3W LED EMERGENCY LIGHT, FOR CLASSIFIED AREAS



EVLED LED LUMINAIRES, FOR CLASSIFIED AREAS



EML LED LUMINAIRE CLASSIFIED AREAS CLASS 1 DIVISION 1



CHAMP VMV 113 W LED PENDANT LIGHT, FOR CLASSIFIED AREAS



LUMINAIRES

LED INDUSTRIAL LIGHT, FOR WET PLACES



HID CHAMP VMV LUMINAIRE FOR AREAS CLASSIFIED IP66, NEMA4X



HAZARD-GARD EVM HID LUMINAIRES FOR CLASSIFIED AREAS CLA 1 DIV 2



LUMINAIRE FOR INTERIOR OR EXTERIOR MOUNTING CHAMP-PAK CPMV CLASS 1 DIVISION 2



FMV REFLECTOR FOR CLASSIFIED AREAS CLASS 1, DIVISION 1 & 2. IP66



CHAMP FMV LED REFLECTOR FOR CLASSIFIED AREAS FROM 70W UP TO 450W



LED OUTDOOR REFLECTOR, FOR CLASSIFIED AREAS, IP66



LED REFLECTOR LUMINAIRE FOR CLASSIFIED AREAS



LEOPARD LED LUMINAIRE FOR CLASSIFIED AREAS, IP66, ZONE 1 & 2



LINEAR LED LUMINAIRE FOR CLASSIFIED AREAS



LUMINAIRES

LINEAR LED LIGHT FOR CLASSIFIED AREAS



EXPLOSION PROOF LED LINEAR LIGHT, CLA 1, DIV.1



LED PROJECTOR FOR CLASSIFIED AREAS



CLA 1 DIV 1 & 2 LED PENDANT LIGHT, NEMA4X



EXPLOSION PROOF CLASS I LED LUMINAIRE, DIVISION 1



INDUSTRIAL LED LUMINAIRE, CLA.1, DIV 2, IP66



LIGHT HEAD LUMINAIRE FOR CLASSIFIED AREAS



LOW BAY LUMINAIRE FOR CLASSIFIED AREAS



EMERGENCY EXIT SIGN FOR CLASSIFIED AREAS



LED EMERGENCY EXIT LUMINAIRE FOR CLASSIFIED AREAS



CONDUIT ACCESORIES

HORIZONTAL OR VERTICAL CONDUIT
FIRE SEAL ENY SERIES FROM 1/2" to
4"CL 1, DIV 1&2



GEB TYPE X ROUND CONDULET BOX
FROM 1/2 to 2" CLA 1, DIV 1&2 - UL
CERTIFICATION



FLEXIBLE COUPLING WITH BRONZE
MESH CLA 1 - DIV 1 & 2



1/2" FEMALE-MALE UNIVERSAL STEEL
UNION, CLA 1, DIV 1&2



UNIVERSAL UNION FEMALE / FEMALE
1/2", CLA 1, DIV 1&2



ROUND CONDULET BOX TYPE C GEB
FROM 1/2 TO 2" CL 1, DIV 1 & 2 - UL
CERTIFICATION



GUAFT NEMA 7 ROUND PASSAGE
BOXES



LBY CONDUIT ELBOW WITH NEMA 7
THREADED COVER



GUA TYPE NEMA 7 PASSAGE GUAFT
ROUND BOX



CONDUIT ELBOW TYPE ELH NPT
THREAD NEMA 7



CONDUIT ACCESORIES

COUPLING WITH BRONZE MESH 1 X 15
CL 1 -DIV 1 & 2



FSC TYPE EXPLOSION PROOF
RECTANGULAR BOX



DOUBLE HH STEEL UNION FOR
CLASSIFIED AREAS



HV FIRE SEAL FOR CLASSIFIED AREAS



POWDER SEALING COMPOUND FOR
HAZARDOUS AREAS



CONNECTION BOXES

ON-OFF SWITCH, 100 A MAX CLASS 1,
DIV 1 & 2 NEMA 4X



EXBSP1 DISTRIBUTION BOARD FOR
CLASSIFIED AREAS CLASS 1, DIVISION 1 & 2



D2LC AUTOMATIC LIGHTING SWITCH
CLASS 1, DIV 1 & 2



AUTOMATIC CIRCUIT BREAKER CLA 1,
DIV 1 & 2



EXB LITE NEMA 4X CLA 1, DIV 1
JUNCTION BOX



B7E CONNECTION BOX WITH
BOLT-ON COVER CLA 1, DIV 1 & 2



EXBLT CONNECTION BOX WITH
BOLT-ON COVER CLA 1, DIV 1 & 2



EXB CONNECTION BOX WITH
BOLT-ON COVER CLA 1, DIV 1 & 2



USF TYPE 316 STAINLESS STEEL
CONNECTION BOX



DOUBLE FXB SUPPORT BOX WITH
3/4" OUTLET CLA 1 DIV 1 & 2



CONNECTION BOXES

GEB ROUND CONDULET BOX TYPE L
FROM 1/2 TO 2" CLA 1, DIV 1& 2



CUSTOM DISTRIBUTION BOX CLASS 1 -
DIVISION 1 & 2



HKBX TB TYPE BOX, FOR AREAS
CLASSIFIED 630VAC-60A. MAX



ELBOW WITH CAP XALB EXPLOSION
PROOF CLASS 1 DIVISION 1 & 2



NEMA 4 ALUMINUM CIRCULAR VJ
OUTLET BOX WITH 1/2" TO 1" INLET



ROUND CONDULET BOX GEB TYPE X
FROM 1/2 TO 2" CLA 1, DIV 1& 2



CIRCULAR BOX WITH HK VIEWER FOR
CLASSIFIED AREAS CLA 1 DIV 1& 2



GEB ROUND CONDULET BOX TYPE T
FROM 1/2" TO 2" CLA 1, DIV 1& 2



ROUND CONDULET BOX GEB TYPE C
FROM 1/2 TO 2" CLA 1, DIV 1 & 2



SUPPORT BOX WITH ONE 3/4"
OUTLET CLA 1, DIV 1 & 2



CONNECTION BOXES

GRSS JUNCTION BOX FOR CLASS 1,
DIVISION 1 & 2 HAZARDOUS AREAS



HINGED TERMINAL BOX FOR
HAZARDOUS AREAS



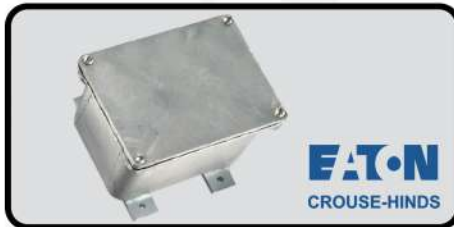
CLASS 1 LINE STARTER - DIVISION 1 & 2
NEMA 4X



CLASS 1 LIGHTING DISTRIBUTION
BOARD, DIVISION 1 & 2



WJB HDG JUNCTION BOXES FOR
CLASSIFIED AREAS



EBMB CONTROL CABINET CLASS 1
DIVISION 1 & 2



GUB JUNCTION BOX FOR CLASSIFIED
AREAS



EJB CABINET CLASSIFIED AREAS
CLASS 1 DIVISION 1 & 2



GUAL JUNCTION BOX WITH THREAD
COVER CLASS 1 DIV 1 & 2



GUA JUNCTION BOX CLASS 1
DIVISION 1 & 2. UL CERTIFICATION



CONNECTION BOXES

PROTECTIVE BOX FOR EDS(C) AND EFD(C) BOXES



FSC EXPLOSION PROOF RECTANGULAR BOX



RECTANGULAR CONDULET BOX FS WITHOUT LID CLASS 1 DIVISION 1 & 2



IRON FS DEVICE BOX FOR DEVICE WITH 3/4" AND 1" INLET



FSC IRON BOX WITH 2 INLETS OF 3/4" AND 1" FOR DEVICE



INDUSTRIAL SOCKETS AND PLUGS

ALUMINUM SWITCH FROM 30A TO 100A, NEMA 3R



ARKTITE WSR/WSRD CLOSED DISCONNECT SWITCH WITH SHEET STEEL



INDUSTRIAL POWER SOCKET ARKTITE AR 30A 3P-3W 600V NEMA 4 UL



INDUSTRIAL PLUG APJ 30A 3P-3W 600V NEMA 4 UL



TAKE FOR AREAS CLASSIFIED CLASS 1 DIVISION 2



VERSAMATE INDUSTRIAL SPRING OUTLET WITH COVER



63A VSIH INDUSTRIAL PLUG, 3P+T



63A VSIH INDUSTRIAL RECEPTACLE, 3P+N+T



PLUG FOR INDUSTRIAL AREAS 3 W -3P



CONTACT US:

 www.smelectricalgroup.com

 800W. Oakland Park Blvd. Suite 304 Wilton
Manors. FL 33311. EE.UU

 Sales@smelectricalgroup.com

 +1 754-223-5655 // +1 754-296-6173